



Virginia Department of Rail and Public Transportation

I-95/I-395 Transit/TDM Study

FAMPO Policy Committee

November 21, 2016

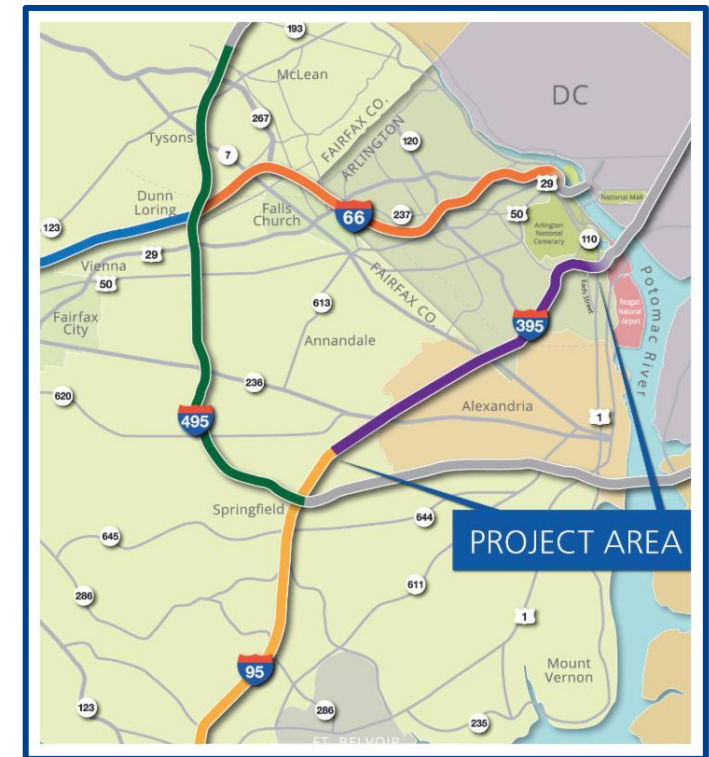
Fredericksburg, Virginia

Jennifer Debruhl
Chief of Public
Transportation

Tom Harrington
Cambridge
Systematics, Inc.

I-395 Express Lanes Project

- Expand and convert the two existing reversible High Occupancy Vehicle (HOV) lanes on I-395 to three managed High Occupancy Toll (HOT) or Express Lanes for approximately eight miles along I-395 from north of Edsall Road to Eads Street near the Pentagon
- Provide improved connections between the proposed I-395 Express Lanes and Eads Street
- Install signage, toll systems, Active Traffic Management System, and sound walls
- **Conduct Transit/TDM study (*DRPT responsibility*)**



Annual Transit Payment

- 395 Express Lanes agreement provides for an annual transit payment from toll revenues for multimodal improvements in the corridor
- Transit and TDM projects eligible for funding will increase mobility and person throughput along I-95 and I-395, and must benefit toll payers in the I-395 corridor
- ***The Commonwealth has committed that at least \$15 million will be provided annually***



Transit/TDM Study

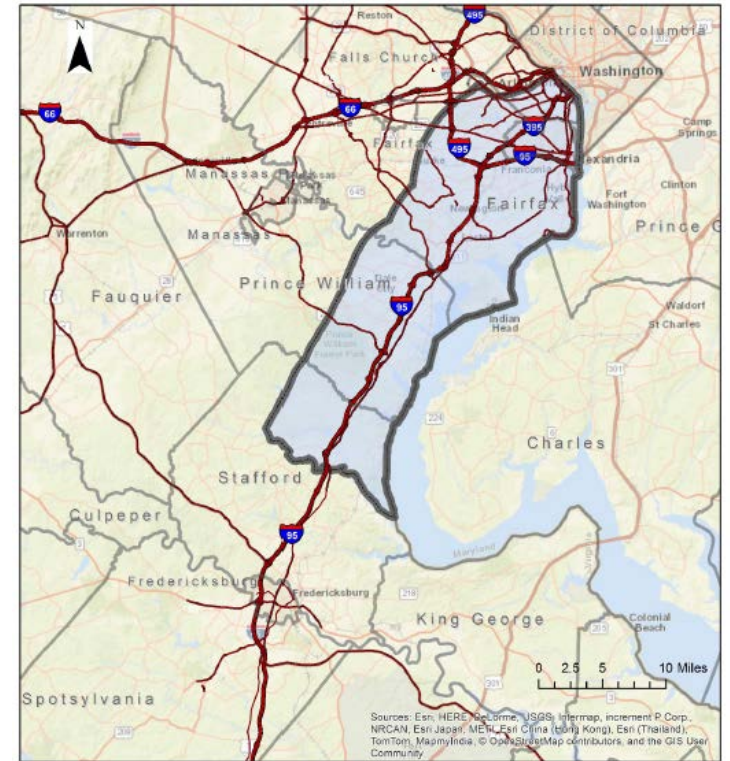
- DRPT leading study in coordination with Arlington, Fairfax, Prince William, Stafford & Spotsylvania Counties, the Cities of Alexandria and Fredericksburg, NVTC, PRTC, VRE, & WMATA
- Developing a plan that identifies potential transit services and TDM program enhancements
- After study completion, Commonwealth will decide the prioritization approach to select which projects to be funded by annual transit payments



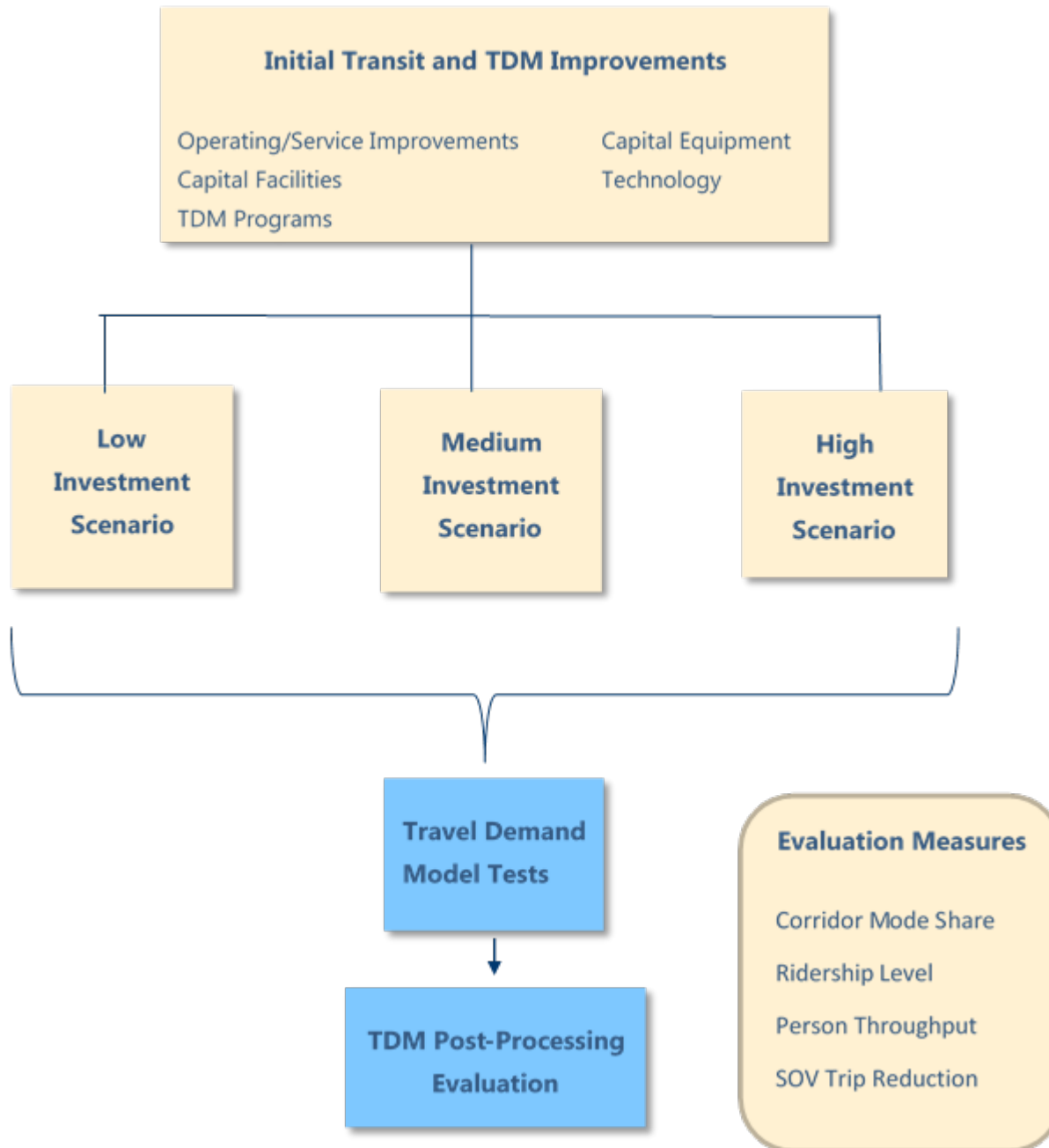
Study Area and Markets



- Study area extends from the southern terminus of the I-95 Express Lanes (at Garrisonville Road) north to the Potomac River
 - Projects as far south as Spotsylvania County have been included in the study and will be eligible for funding
- Transit/TDM services, programs and facilities that are being studied include those that:
 - Serve work destinations within the project study area inside the Beltway (including downtown DC) and
 - Directly use the I-395 Express Lanes, or
 - Provide direct access to transit services in the corridor or increase person throughput or travel choices in the study area



Evaluation Approach



Proposed Transit Improvements in FAMPO Jurisdictions



- New bus routes:
 - Express bus to DC/Pentagon/Crystal City from Stafford/Fredericksburg/Massaponax
 - FRED routes to VRE stations and commuter Park & Ride Lots
- Additional commuter parking:
 - Spotsylvania County (Route 3)
 - Stafford County (Route 610, Route 630, Centreport Parkway)
 - Prince William County (Route 234, Route 1, PRTC Transit Center, Potomac Mills)
- Develop transit/TDM hub at Spotsylvania VRE Station

Proposed Corridor Wide Improvements



- ITS projects
- VRE:
 - Increase in number of VRE trains
 - Lengthen all trains to 8 cars
 - Expansion of VRE equipment storage facilities
 - Additional commuter parking at VRE stations
 - VRE platform extensions
 - Rail infrastructure improvements
- Metrorail fleet expansion to 8-car trains
- Commuter bus layover and staging facility

Proposed PRTC Transit Improvements



- Improve frequency on existing PRTC routes
- New PRTC Western Maintenance and Storage Facility
- New PRTC bus Routes:
 - Extend OmniLink Route 1 service to Fort Belvoir
 - OmniRide routes to Alexandria and Pentagon
 - OmniLink to Montclair
- High Capacity Transit between Franconia-Springfield Metrorail station and Potomac Mills
- Richmond Highway BRT between Huntington Metrorail Station and Woodbridge

Proposed TDM Program Improvements

- Marketing and outreach programs
- Real-time information access
- Enhanced access to existing modes
- New flexible mode options
- Increased employer involvement
- Priority HOV access to transportation facilities
- Shift balance of SOV/HOV cost



Study Schedule and Key Dates

TASK	2016									
	APR	MAY	JUN	JUL	AUG	SEP	OCT	NOV	DEC	
Data Collection/Assembly and Study/Plan Review	■	■								
Detailed Work Program	■									
Regional Stakeholder Committee Meetings	■	■	■	■	■	■	■	■	■	■
Public/Agency Outreach and Participation	■	■	■	■	■	■	■	■	■	■
Baseline Conditions and Needs Assessment		■	■	■						
Transit/TDM Recommendations				■	■					
Testing & Refinements of Transit/TDM Recs					■	■	■			
Transit/TDM Demand Forecasting & Traffic/Mode Analysis	■	■	■	■	■	■				
Sensitivity Analysis						■	■	■		
Park and Ride Lot Analysis		■	■		■	■	■			
Cost/Revenue/Subsidy Projections							■	■	■	
Potential Investment Strategies								■	■	
Final Report									■	■

- Public outreach during summer 2016 including pop-up events, open houses, agency briefings, VDOT events, commuter survey
- Final Report due in mid-December 2016
- Express Lanes open in 2019

