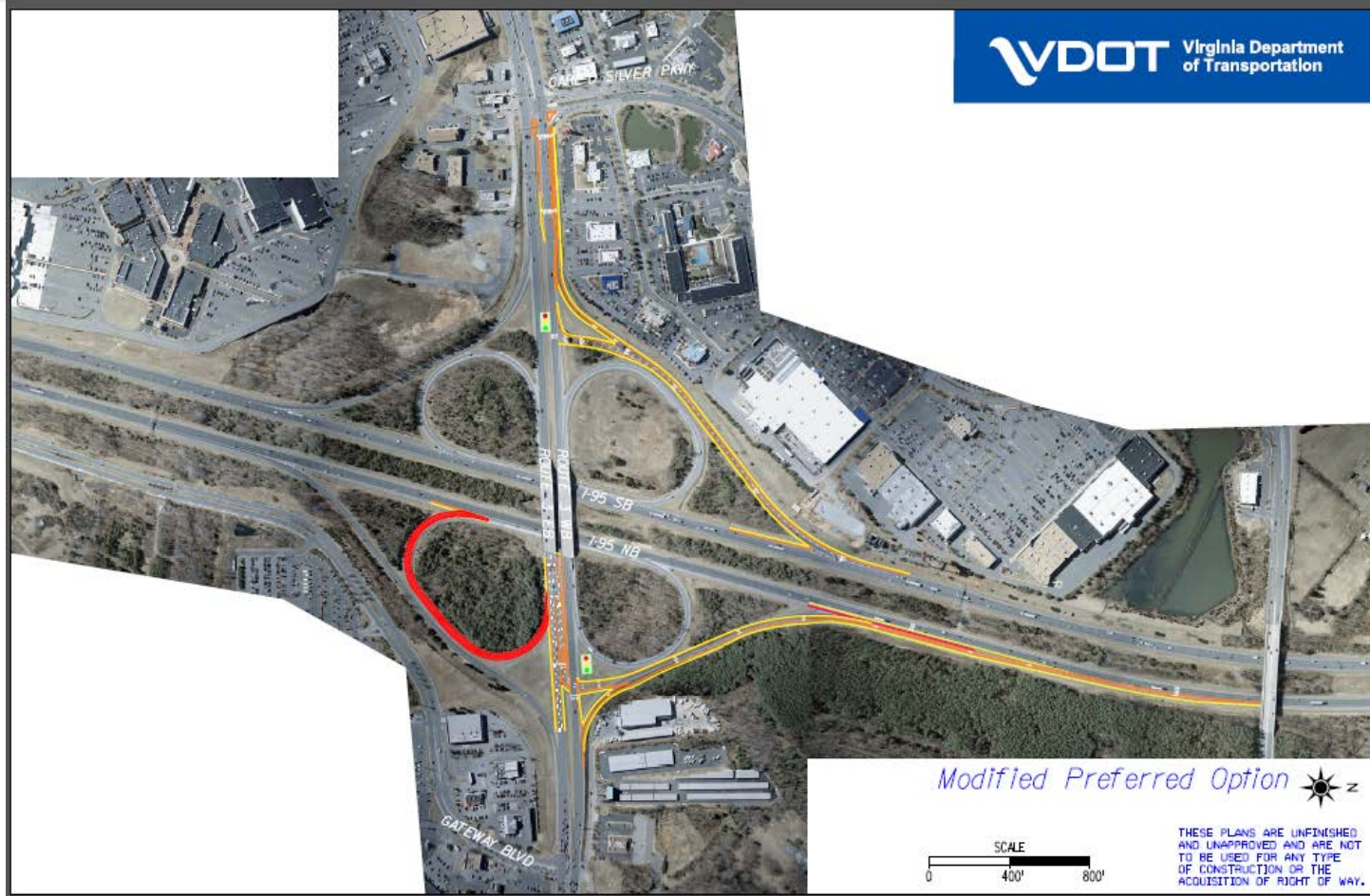



Interstate 95 – Exit 130 Safety Improvements

March 9, 2016

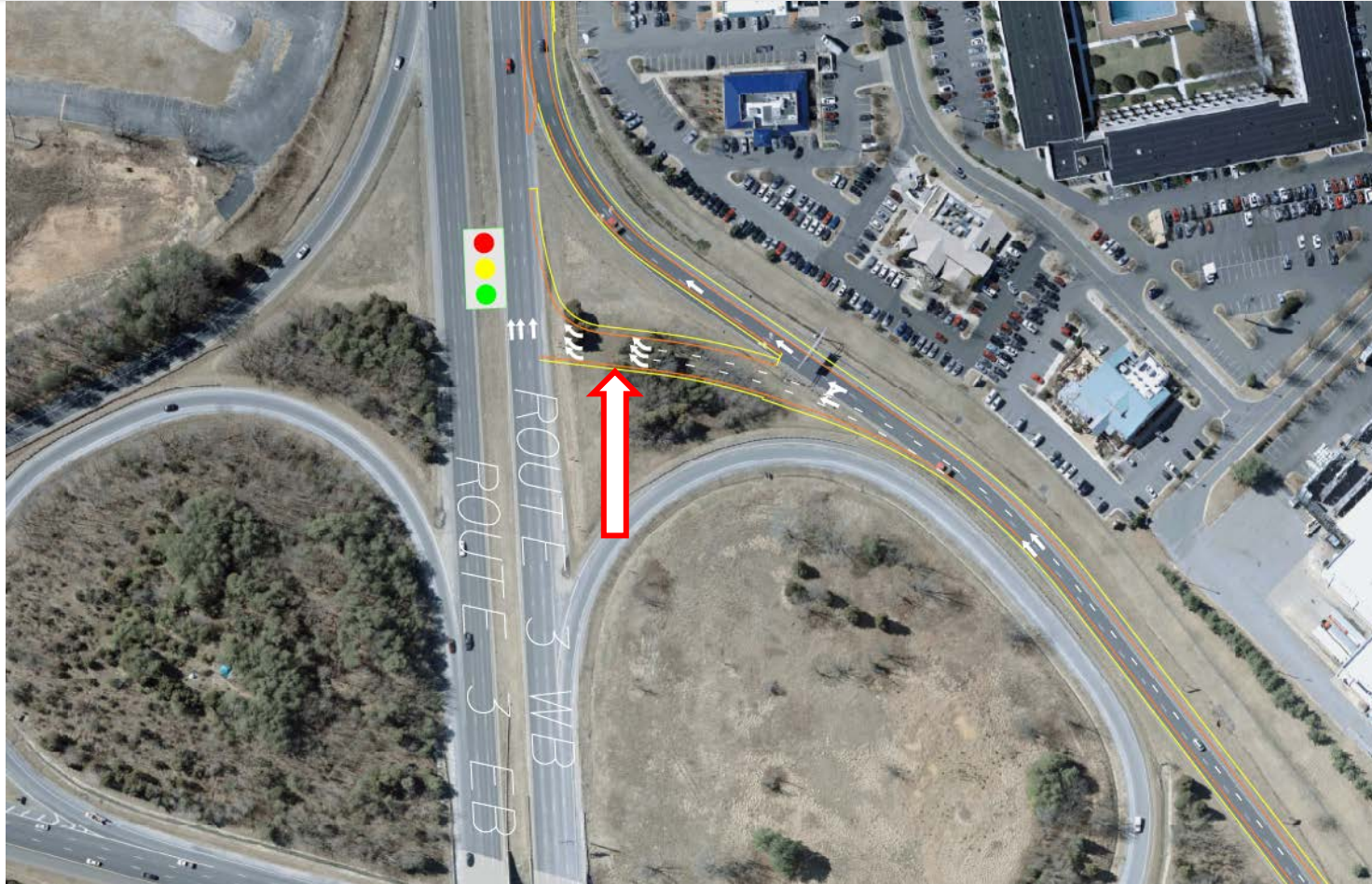
Overview of Interchange Improvements



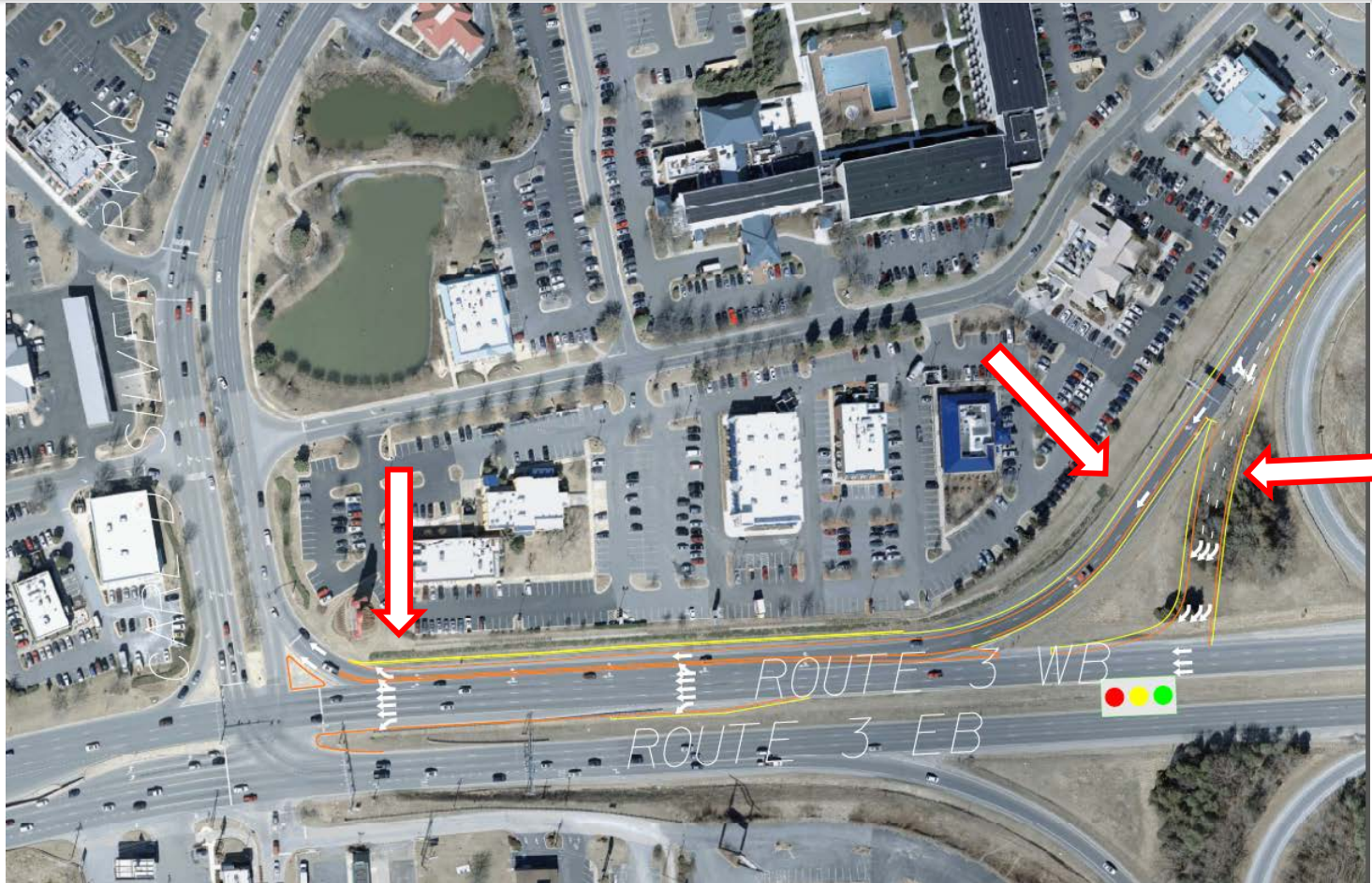
Route 3 Southbound Improvements

- **Widen Exit 130 exit ramp to 3 lanes and create signalized right turn onto Route 3 westbound**
 - **Exit ramp will include a channelized lane to Carl D. Silver Parkway**
 - **Extend deceleration lane and storage for I-95 SB to Route 3 WB**
- 

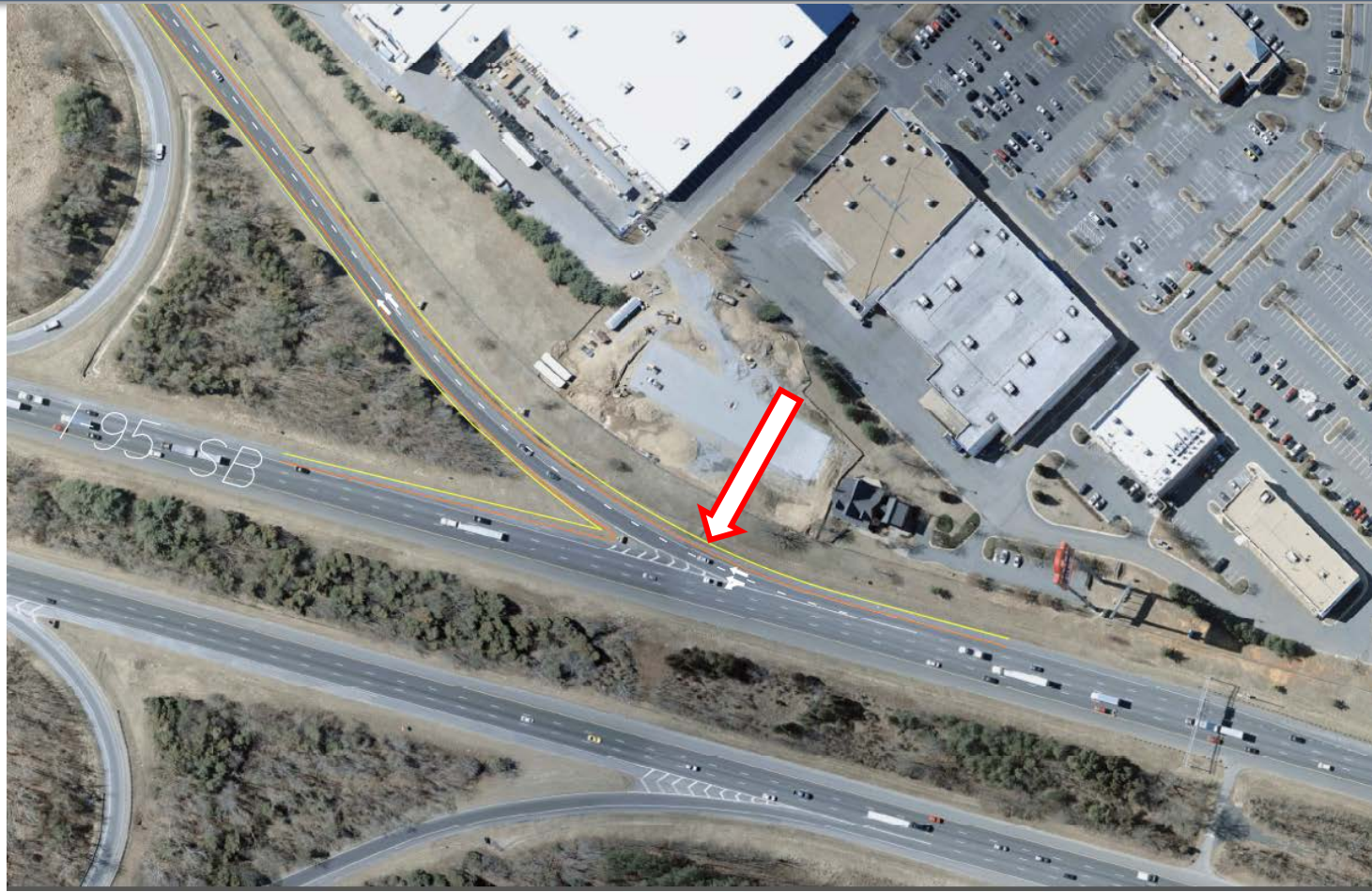
Overview of Route 3 Southbound Triple Right Turn




Overview of Route 3 Southbound Slip Lane



Overview of Route 3 Southbound Diverge



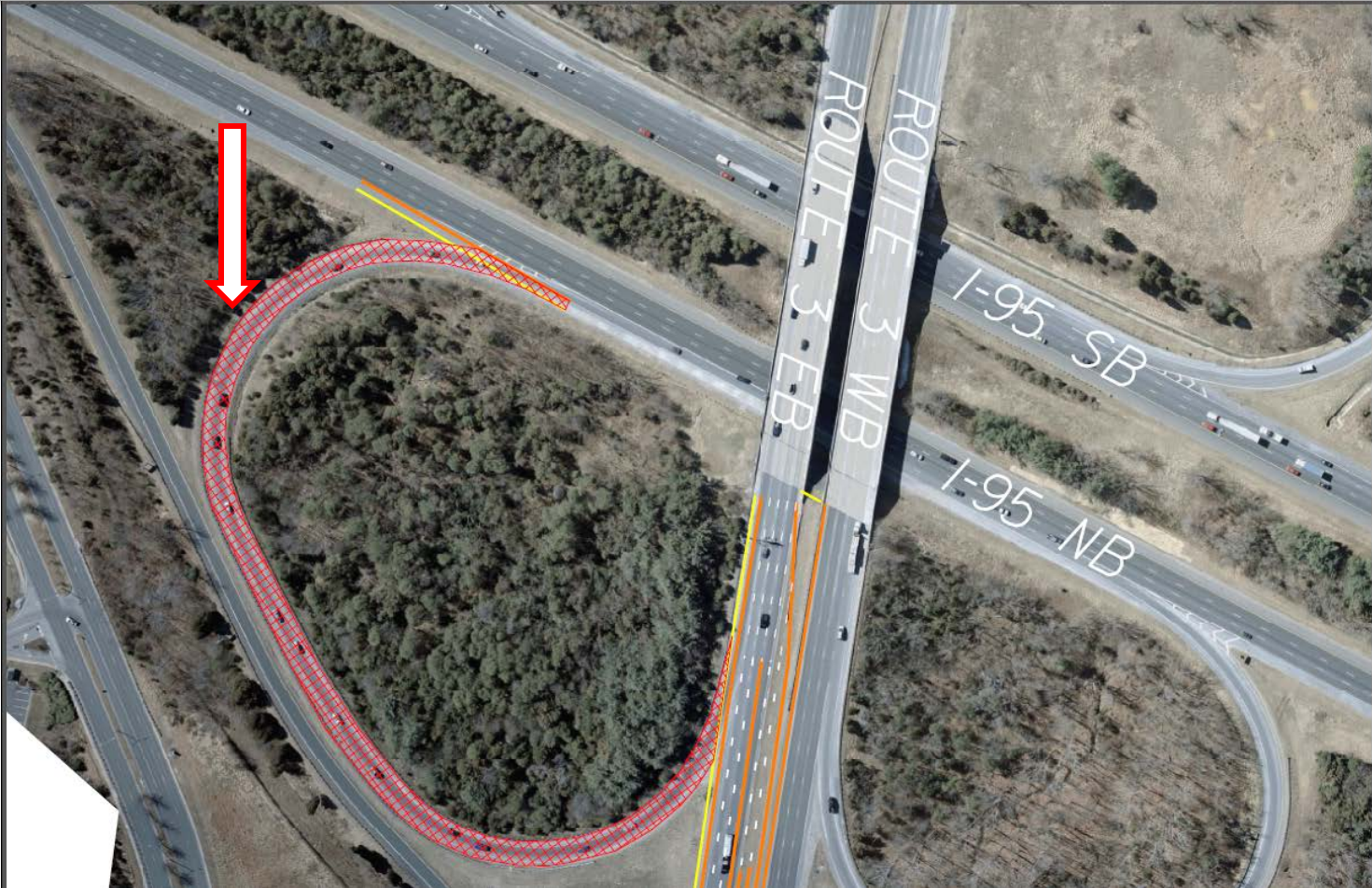
Route 3 Northbound Improvements

- **Remove loop - Route 3 EB to I-95 NB**
 - **Construct triple left with a 2-phase signal**
- 

Overview of Route 3 Northbound Triple Left



Overview of Removal of Route 3 Northbound Weave



Next Steps

- **Project Estimate \$ 21 million**
 - **Complete preliminary design, NEPA requirements**
 - **Advance as a Design-Build procurement**
 - **Public Hearing - Spring/Summer 2016**
 - **RFP release – Fall 2016**
- 

Thank You!